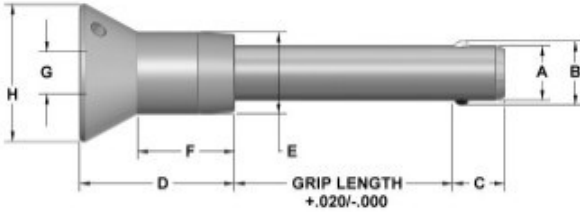




QUICK RELEASE BALL LOCK PINS

Stainless Steel Nautical Recessed Handle | Inch

MA MODIFICATIONS AVAILABLE



Dia	Hole Size		Min. Pull-Out Strength (lbs)	Calculated Double Shear (lbs)	
	Max	Min		17-4 Stainless	300 Series SS*
3/16	.190	.190	200	5,150	—
1/4	.250	.250	230	9,200	2,200
5/16	.315	.3125	510	14,400	3,500
3/8	.375	.375	575	20,600	4,500
1/2	.500	.500	1,160	36,800	11,500
5/8	.625	.625	2,070	57,500	—

*Note: 300 Series Stainless is not recommended in applications where shear forces are a factor

These positive locking quick release pins have a wide range of uses in fastening, locating, and alignment applications. The pins will not release until the button on the handle is depressed. Once the button is depressed, the balls retract into the shank allowing the pin to be inserted or removed into or out of a hole. They are available in two stainless shank materials to meet your application. The handles are designed to prevent accidental release and are machined from 303 stainless steel. These pins are not supplied with stainless steel split rings. For specific application requirements, custom modifications are available for this product line. See page 3 for complete specifications. If a lanyard is ordered with the recessed handle, the lanyard will be attached directly to the pin without a split ring.

17-4 SS Part #	300 Series SS Part #	Nominal Diameter	A Max	A Min	Grip Length	+/- .005 B	+ .000/- .030 C	D	E	F	Button G H	
NCCH-18-050	---	3/16	.1885	.1870	.50	.220	.260	.97	.47	.64	23	.81
NCCH-18-075	---	3/16	.1885	.1870	.75	.220	.260	.97	.47	.64	23	.81
NCCH-18-100	---	3/16	.1885	.1870	1.00	.220	.260	.97	.47	.64	23	.81
NCCH-18-125	---	3/16	.1885	.1870	1.25	.220	.260	.97	.47	.64	23	.81
NCCH-18-150	---	3/16	.1885	.1870	1.50	.220	.260	.97	.47	.64	23	.81
NCCH-18-175	---	3/16	.1885	.1870	1.75	.220	.260	.97	.47	.64	23	.81
NCCH-18-200	---	3/16	.1885	.1870	2.00	.220	.260	.97	.47	.64	23	.81
NCCH-18-250	---	3/16	.1885	.1870	2.50	.220	.260	.97	.47	.64	23	.81
NCCH-18-300	---	3/16	.1885	.1870	3.00	.220	.260	.97	.47	.64	23	.81
NCCH-18-350	---	3/16	.1885	.1870	3.50	.220	.260	.97	.47	.64	23	.81
NCCH-18-400	---	3/16	.1885	.1870	4.00	.220	.260	.97	.47	.64	23	.81
NCCH-25-050	NCCS-25-050	1/4	2.485	2.470	.50	.289	.290	.97	.47	.64	23	.81
NCCH-25-075	NCCS-25-075	1/4	2.485	2.470	.75	.289	.290	.97	.47	.64	23	.81
NCCH-25-100	NCCS-25-100	1/4	2.485	2.470	1.00	.289	.290	.97	.47	.64	23	.81
NCCH-25-125	NCCS-25-125	1/4	2.485	2.470	1.25	.289	.290	.97	.47	.64	23	.81
NCCH-25-150	NCCS-25-150	1/4	2.485	2.470	1.50	.289	.290	.97	.47	.64	23	.81
NCCH-25-175	NCCS-25-175	1/4	2.485	2.470	1.75	.289	.290	.97	.47	.64	23	.81
NCCH-25-200	NCCS-25-200	1/4	2.485	2.470	2.00	.289	.290	.97	.47	.64	23	.81
NCCH-25-250	NCCS-25-250	1/4	2.485	2.470	2.50	.289	.290	.97	.47	.64	23	.81
NCCH-25-300	NCCS-25-300	1/4	2.485	2.470	3.00	.289	.290	.97	.47	.64	23	.81
NCCH-25-350	NCCS-25-350	1/4	2.485	2.470	3.50	.289	.290	.97	.47	.64	23	.81
NCCH-25-400	NCCS-25-400	1/4	2.485	2.470	4.00	.289	.290	.97	.47	.64	23	.81
NCCH-31-050	NCCS-31-050	5/16	3.110	3.095	.50	.375	.330	.97	.47	.64	23	.81
NCCH-31-075	NCCS-31-075	5/16	3.110	3.095	.75	.375	.330	.97	.47	.64	23	.81
NCCH-31-100	NCCS-31-100	5/16	3.110	3.095	1.00	.375	.330	.97	.47	.64	23	.81
NCCH-31-125	NCCS-31-125	5/16	3.110	3.095	1.25	.375	.330	.97	.47	.64	23	.81
NCCH-31-150	NCCS-31-150	5/16	3.110	3.095	1.50	.375	.330	.97	.47	.64	23	.81
NCCH-31-175	NCCS-31-175	5/16	3.110	3.095	1.75	.375	.330	.97	.47	.64	23	.81
NCCH-31-200	NCCS-31-200	5/16	3.110	3.095	2.00	.375	.330	.97	.47	.64	23	.81
NCCH-31-250	NCCS-31-250	5/16	3.110	3.095	2.50	.375	.330	.97	.47	.64	23	.81
NCCH-31-300	NCCS-31-300	5/16	3.110	3.095	3.00	.375	.330	.97	.47	.64	23	.81
NCCH-31-350	NCCS-31-350	5/16	3.110	3.095	3.50	.375	.330	.97	.47	.64	23	.81
NCCH-31-400	NCCS-31-400	5/16	3.110	3.095	4.00	.375	.330	.97	.47	.64	23	.81

Note: Products in this catalogue are subject to availability



Head Office: Concept Fasteners VIC
 9 Flight Drive, Tullamarine 3043, Victoria
 Tel: (03) 9338 6633 Fax: (03) 9338 6433
 Email: sales@conceptfasteners.com.au

Concept Fasteners NSW
 5 Liverpool St, Ingleburn 2565, NSW
 Tel: (02) 9774 4416
 Email: salesnsw@conceptfasteners.com.au

Concept Fasteners QLD
 Brisbane Branch Coming Soon!

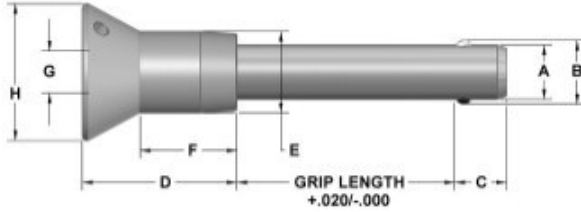
Email: qldsales@conceptfasteners.com.au



QUICK RELEASE BALL LOCK PINS

Stainless Steel Nautical Recessed Handle 1 Inch (continued)

MA MODIFICATIONS AVAILABLE



Dia	Hole Size		Min. Pull-Out Strength (lbs)	Calculated Double Shear (lbs)	
	Max	Min		17-4 Stainless	300 Series SS*
3/16	.190	.190	20	5,150	—
1/4	.250	.250	23	9,200	2,200
5/16	.315	.3125	51	14,400	3,500
3/8	.375	.375	57.5	20,600	4,500
1/2	.500	.500	1,160	36,800	11,500
5/8	.625	.625	2,070	57,500	—

*Note: 300 Series Stainless is not recommended in applications where shear forces are a factor

17-4 SS Part #	300 Series SS Part #	Nominal Diameter	A Max	A Min	Grip Length	+/- .005 B	+ .000/- .030 C	D	E	F	Button G	H
NCCH-37-050	NCCS-37-050	3/8	.3735	.3720	.50	.440	.365	1.06	.56	.66	.29	.94
NCCH-37-075	NCCS-37-075	3/8	.3735	.3720	.75	.440	.365	1.06	.56	.66	.29	.94
NCCH-37-100	NCCS-37-100	3/8	.3735	.3720	1.00	.440	.365	1.06	.56	.66	.29	.94
NCCH-37-125	NCCS-37-125	3/8	.3735	.3720	1.25	.440	.365	1.06	.56	.66	.29	.94
NCCH-37-150	NCCS-37-150	3/8	.3735	.3720	1.50	.440	.365	1.06	.56	.66	.29	.94
NCCH-37-175	NCCS-37-175	3/8	.3735	.3720	1.75	.440	.365	1.06	.56	.66	.29	.94
NCCH-37-200	NCCS-37-200	3/8	.3735	.3720	2.00	.440	.365	1.06	.56	.66	.29	.94
NCCH-37-250	NCCS-37-250	3/8	.3735	.3720	2.50	.440	.365	1.06	.56	.66	.29	.94
NCCH-37-300	NCCS-37-300	3/8	.3735	.3720	3.00	.440	.365	1.06	.56	.66	.29	.94
NCCH-37-350	NCCS-37-350	3/8	.3735	.3720	3.50	.440	.365	1.06	.56	.66	.29	.94
NCCH-37-400	NCCS-37-400	3/8	.3735	.3720	4.00	.440	.365	1.06	.56	.66	.29	.94
NCCH-50-100	NCCS-50-100	1/2	.4985	.4970	1.00	.594	.460	1.31	.72	.89	.42	1.12
NCCH-50-125	NCCS-50-125	1/2	.4985	.4970	1.25	.594	.460	1.31	.72	.89	.42	1.12
NCCH-50-150	NCCS-50-150	1/2	.4985	.4970	1.50	.594	.460	1.31	.72	.89	.42	1.12
NCCH-50-175	NCCS-50-175	1/2	.4985	.4970	1.75	.594	.460	1.31	.72	.89	.42	1.12
NCCH-50-200	NCCS-50-200	1/2	.4985	.4970	2.00	.594	.460	1.31	.72	.89	.42	1.12
NCCH-50-250	NCCS-50-250	1/2	.4985	.4970	2.50	.594	.460	1.31	.72	.89	.42	1.12
NCCH-50-300	NCCS-50-300	1/2	.4985	.4970	3.00	.594	.460	1.31	.72	.89	.42	1.12
NCCH-50-350	NCCS-50-350	1/2	.4985	.4970	3.50	.594	.460	1.31	.72	.89	.42	1.12
NCCH-50-400	NCCS-50-400	1/2	.4985	.4970	4.00	.594	.460	1.31	.72	.89	.42	1.12
NCCH-50-450	NCCS-50-450	1/2	.4985	.4970	4.50	.594	.460	1.31	.72	.89	.42	1.12
NCCH-50-500	NCCS-50-500	1/2	.4985	.4970	5.00	.594	.460	1.31	.72	.89	.42	1.12
NCCH-50-550	NCCS-50-550	1/2	.4985	.4970	5.50	.594	.460	1.31	.72	.89	.42	1.12
NCCH-50-600	NCCS-50-600	1/2	.4985	.4970	6.00	.594	.460	1.31	.72	.89	.42	1.12
NCCH-62-150	—	5/8	.6235	.6220	1.50	.750	.580	1.69	.94	1.12	.54	1.44
NCCH-62-175	—	5/8	.6235	.6220	1.75	.750	.580	1.69	.94	1.12	.54	1.44
NCCH-62-200	—	5/8	.6235	.6220	2.00	.750	.580	1.69	.94	1.12	.54	1.44
NCCH-62-250	—	5/8	.6235	.6220	2.50	.750	.580	1.69	.94	1.12	.54	1.44
NCCH-62-300	—	5/8	.6235	.6220	3.00	.750	.580	1.69	.94	1.12	.54	1.44
NCCH-62-350	—	5/8	.6235	.6220	3.50	.750	.580	1.69	.94	1.12	.54	1.44
NCCH-62-400	—	5/8	.6235	.6220	4.00	.750	.580	1.69	.94	1.12	.54	1.44
NCCH-62-450	—	5/8	.6235	.6220	4.50	.750	.580	1.69	.94	1.12	.54	1.44
NCCH-62-500	—	5/8	.6235	.6220	5.00	.750	.580	1.69	.94	1.12	.54	1.44
NCCH-62-550	—	5/8	.6235	.6220	5.50	.750	.580	1.69	.94	1.12	.54	1.44
NCCH-62-600	—	5/8	.6235	.6220	6.00	.750	.580	1.69	.94	1.12	.54	1.44

Note: Products in this catalogue are subject to availability



Head Office: Concept Fasteners VIC
 9 Flight Drive, Tullamarine 3043, Victoria
 Tel: (03) 9338 6633 Fax: (03) 9338 6433
 : sales@conceptfasteners.com.au

Head Office: Concept Fasteners NSW
 5 Liverpool St, Ingleburn 2565, NSW
 Tel: (02) 9774 4416
 : salesnsw@conceptfasteners.com.au

Head Office: Concept Fasteners QLD
 Brisbane Branch Coming Soon!
 : qldsales@conceptfasteners.com.au