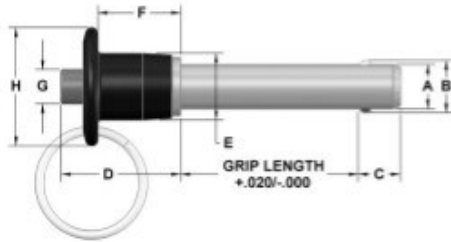




QUICK RELEASE BALL LOCK PINS

Aluminum Button Handle 1 Inch

MA MODIFICATIONS AVAILABLE



Dia	Hole Size		Min. Pull-Out Strength (lbs)	Calculated Double Shear (lbs)		
	Max	Min		4130 Steel	17-4 Stainless	301 Series SS*
3/16	.1940	.1900	200	4,600	5,150	—
1/4	.2540	.2500	230	8,200	9,200	2,200
5/16	.3165	.3125	510	12,800	14,400	3,500
3/8	.3790	.3750	575	18,400	20,600	4,500
1/2	.5050	5.000	1,160	32,800	36,800	11,500
5/8	.6300	6.250	2,070	51,200	57,500	—

*Note: 301 Series Stainless is not recommended in applications where shear forces are a factor.

These positive locking quick release pins have a wide range of uses in fastening, locating, and alignment applications. The pins will not release until the button on the handle is depressed. Once the button is depressed, the balls retract into the shank allowing the pin to be inserted or removed into or out of a hole. They are available in three shank materials to meet your application. The handles for the pins listed below are made from 2024-T4 aluminum and anodized black. The pins are supplied with a stainless steel split ring for attaching a cable assembly. In addition to the standard sizes shown below, custom solutions and additional sizes are available as special order. See page 3 for complete specifications.

4130 Steel Part #	17-4 SS Part #	300 Series SS Part #	Nominal Diameter	A Max	A Min	Grip Length	+/- .005 B	+ .000/- .030 C	D	E	F	G	H
BAAS-18-050	BACH-18-050	—	3/16	.1885	.1870	.50	.220	.260	.92	.47	.63	.23	.81
BAAS-18-075	BACH-18-075	—	3/16	.1885	.1870	.75	.220	.260	.92	.47	.63	.23	.81
BAAS-18-100	BACH-18-100	—	3/16	.1885	.1870	1.00	.220	.260	.92	.47	.63	.23	.81
BAAS-18-125	BACH-18-125	—	3/16	.1885	.1870	1.25	.220	.260	.92	.47	.63	.23	.81
BAAS-18-150	BACH-18-150	—	3/16	.1885	.1870	1.50	.220	.260	.92	.47	.63	.23	.81
BAAS-18-175	BACH-18-175	—	3/16	.1885	.1870	1.75	.220	.260	.92	.47	.63	.23	.81
BAAS-18-200	BACH-18-200	—	3/16	.1885	.1870	2.00	.220	.260	.92	.47	.63	.23	.81
BAAS-18-250	BACH-18-250	—	3/16	.1885	.1870	2.50	.220	.260	.92	.47	.63	.23	.81
BAAS-18-300	BACH-18-300	—	3/16	.1885	.1870	3.00	.220	.260	.92	.47	.63	.23	.81
BAAS-18-350	BACH-18-350	—	3/16	.1885	.1870	3.50	.220	.260	.92	.47	.63	.23	.81
BAAS-18-400	BACH-18-400	—	3/16	.1885	.1870	4.00	.220	.260	.92	.47	.63	.23	.81
BAAS-25-050	BACH-25-050	BACS-25-050	1/4	.2485	.2470	.50	.289	.290	.92	.47	.63	.23	.81
BAAS-25-075	BACH-25-075	BACS-25-075	1/4	.2485	.2470	.75	.289	.290	.92	.47	.63	.23	.81
BAAS-25-100	BACH-25-100	BACS-25-100	1/4	.2485	.2470	1.00	.289	.290	.92	.47	.63	.23	.81
BAAS-25-125	BACH-25-125	BACS-25-125	1/4	.2485	.2470	1.25	.289	.290	.92	.47	.63	.23	.81
BAAS-25-150	BACH-25-150	BACS-25-150	1/4	.2485	.2470	1.50	.289	.290	.92	.47	.63	.23	.81
BAAS-25-175	BACH-25-175	BACS-25-175	1/4	.2485	.2470	1.75	.289	.290	.92	.47	.63	.23	.81
BAAS-25-200	BACH-25-200	BACS-25-200	1/4	.2485	.2470	2.00	.289	.290	.92	.47	.63	.23	.81
BAAS-25-250	BACH-25-250	BACS-25-250	1/4	.2485	.2470	2.50	.289	.290	.92	.47	.63	.23	.81
BAAS-25-300	BACH-25-300	BACS-25-300	1/4	.2485	.2470	3.00	.289	.290	.92	.47	.63	.23	.81
BAAS-25-350	BACH-25-350	BACS-25-350	1/4	.2485	.2470	3.50	.289	.290	.92	.47	.63	.23	.81
BAAS-25-400	BACH-25-400	BACS-25-400	1/4	.2485	.2470	4.00	.289	.290	.92	.47	.63	.23	.81
BAAS-31-050	BACH-31-050	BACS-31-050	5/16	.3110	.3095	.50	.375	.330	.92	.47	.63	.23	.81
BAAS-31-075	BACH-31-075	BACS-31-075	5/16	.3110	.3095	.75	.375	.330	.92	.47	.63	.23	.81
BAAS-31-100	BACH-31-100	BACS-31-100	5/16	.3110	.3095	1.00	.375	.330	.92	.47	.63	.23	.81
BAAS-31-125	BACH-31-125	BACS-31-125	5/16	.3110	.3095	1.25	.375	.330	.92	.47	.63	.23	.81
BAAS-31-150	BACH-31-150	BACS-31-150	5/16	.3110	.3095	1.50	.375	.330	.92	.47	.63	.23	.81
BAAS-31-175	BACH-31-175	BACS-31-175	5/16	.3110	.3095	1.75	.375	.330	.92	.47	.63	.23	.81
BAAS-31-200	BACH-31-200	BACS-31-200	5/16	.3110	.3095	2.00	.375	.330	.92	.47	.63	.23	.81
BAAS-31-250	BACH-31-250	BACS-31-250	5/16	.3110	.3095	2.50	.375	.330	.92	.47	.63	.23	.81
BAAS-31-300	BACH-31-300	BACS-31-300	5/16	.3110	.3095	3.00	.375	.330	.92	.47	.63	.23	.81
BAAS-31-350	BACH-31-350	BACS-31-350	5/16	.3110	.3095	3.50	.375	.330	.92	.47	.63	.23	.81
BAAS-31-400	BACH-31-400	BACS-31-400	5/16	.3110	.3095	4.00	.375	.330	.92	.47	.63	.23	.81

Note: Products in this catalogue are subject to availability



Head Office: Concept Fasteners VIC
 9 Flight Drive, Tullamarine 3043, Victoria
 Tel: (03) 9338 6633 Fax: (03) 9338 6433
 Email: sales@conceptfasteners.com.au

Concept Fasteners NSW
 5 Liverpool St, Ingleburn 2565, NSW
 Tel: (02) 9774 4416
 Email: salesnsw@conceptfasteners.com.au

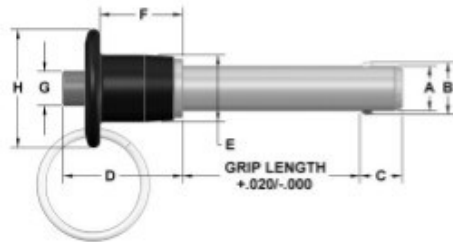
Concept Fasteners QLD
 Brisbane Branch Coming Soon!
 Email: qldsales@conceptfasteners.com.au



QUICK RELEASE BALL LOCK PINS

Aluminum Button Handle 1 Inch (continued)

MA MODIFICATIONS AVAILABLE



Dia	Hole Size		Min. Pull-Out Strength (lbs)	Calculated Double Shear (lbs)		
	Max	Min		4130 Steel	17-4 Stainless	300 Series SS*
3/16	.1940	.1900	200	4,600	5,150	—
1/4	.2540	.2500	230	8,200	9,200	2,200
5/16	.3165	.3125	510	12,800	14,400	3,500
3/8	.3790	.3750	575	18,400	20,600	4,500
1/2	.5050	.5000	1,160	32,800	36,800	11,500
5/8	.6300	.6250	2,070	51,200	57,500	—

*Note: 300 Series Stainless is not recommended in applications where shear forces are a factor.

4130 Steel Part #	17-4 SS Part #	300 Series SS Part #	Nominal Diameter	A Max	A Min	Grip Length	+/- .005 B	+ .000/- .030 C	D	E	F	G	H
BAAS-37-050	BACH-37-050	BACS-37-050	3/8	.3735	.3720	.50	.440	.365	1.01	.56	.70	.29	1.00
BAAS-37-075	BACH-37-075	BACS-37-075	3/8	.3735	.3720	.75	.440	.365	1.01	.56	.70	.29	1.00
BAAS-37-100	BACH-37-100	BACS-37-100	3/8	.3735	.3720	1.00	.440	.365	1.01	.56	.70	.29	1.00
BAAS-37-125	BACH-37-125	BACS-37-125	3/8	.3735	.3720	1.25	.440	.365	1.01	.56	.70	.29	1.00
BAAS-37-150	BACH-37-150	BACS-37-150	3/8	.3735	.3720	1.50	.440	.365	1.01	.56	.70	.29	1.00
BAAS-37-175	BACH-37-175	BACS-37-175	3/8	.3735	.3720	1.75	.440	.365	1.01	.56	.70	.29	1.00
BAAS-37-200	BACH-37-200	BACS-37-200	3/8	.3735	.3720	2.00	.440	.365	1.01	.56	.70	.29	1.00
BAAS-37-250	BACH-37-250	BACS-37-250	3/8	.3735	.3720	2.50	.440	.365	1.01	.56	.70	.29	1.00
BAAS-37-300	BACH-37-300	BACS-37-300	3/8	.3735	.3720	3.00	.440	.365	1.01	.56	.70	.29	1.00
BAAS-37-350	BACH-37-350	BACS-37-350	3/8	.3735	.3720	3.50	.440	.365	1.01	.56	.70	.29	1.00
BAAS-37-400	BACH-37-400	BACS-37-400	3/8	.3735	.3720	4.00	.440	.365	1.01	.56	.70	.29	1.00
BAAS-50-100	BACH-50-100	BACS-50-100	1/2	.4985	.4970	1.00	.594	.460	1.27	.72	.85	.42	1.37
BAAS-50-125	BACH-50-125	BACS-50-125	1/2	.4985	.4970	1.25	.594	.460	1.27	.72	.85	.42	1.37
BAAS-50-150	BACH-50-150	BACS-50-150	1/2	.4985	.4970	1.50	.594	.460	1.27	.72	.85	.42	1.37
BAAS-50-175	BACH-50-175	BACS-50-175	1/2	.4985	.4970	1.75	.594	.460	1.27	.72	.85	.42	1.37
BAAS-50-200	BACH-50-200	BACS-50-200	1/2	.4985	.4970	2.00	.594	.460	1.27	.72	.85	.42	1.37
BAAS-50-250	BACH-50-250	BACS-50-250	1/2	.4985	.4970	2.50	.594	.460	1.27	.72	.85	.42	1.37
BAAS-50-300	BACH-50-300	BACS-50-300	1/2	.4985	.4970	3.00	.594	.460	1.27	.72	.85	.42	1.37
BAAS-50-350	BACH-50-350	BACS-50-350	1/2	.4985	.4970	3.50	.594	.460	1.27	.72	.85	.42	1.37
BAAS-50-400	BACH-50-400	BACS-50-400	1/2	.4985	.4970	4.00	.594	.460	1.27	.72	.85	.42	1.37
BAAS-50-450	BACH-50-450	BACS-50-450	1/2	.4985	.4970	4.50	.594	.460	1.27	.72	.85	.42	1.37
BAAS-50-500	BACH-50-500	BACS-50-500	1/2	.4985	.4970	5.00	.594	.460	1.27	.72	.85	.42	1.37
BAAS-50-550	BACH-50-550	BACS-50-550	1/2	.4985	.4970	5.50	.594	.460	1.27	.72	.85	.42	1.37
BAAS-50-600	BACH-50-600	BACS-50-600	1/2	.4985	.4970	6.00	.594	.460	1.27	.72	.85	.42	1.37
BAAS-62-150	BACH-62-150	---	5/8	.6235	.6220	1.50	.750	.580	1.65	.94	1.10	.54	1.75
BAAS-62-175	BACH-62-175	---	5/8	.6235	.6220	1.75	.750	.580	1.65	.94	1.10	.54	1.75
BAAS-62-200	BACH-62-200	---	5/8	.6235	.6220	2.00	.750	.580	1.65	.94	1.10	.54	1.75
BAAS-62-250	BACH-62-250	---	5/8	.6235	.6220	2.50	.750	.580	1.65	.94	1.10	.54	1.75
BAAS-62-300	BACH-62-300	---	5/8	.6235	.6220	3.00	.750	.580	1.65	.94	1.10	.54	1.75
BAAS-62-350	BACH-62-350	---	5/8	.6235	.6220	3.50	.750	.580	1.65	.94	1.10	.54	1.75
BAAS-62-400	BACH-62-400	---	5/8	.6235	.6220	4.00	.750	.580	1.65	.94	1.10	.54	1.75
BAAS-62-450	BACH-62-450	---	5/8	.6235	.6220	4.50	.750	.580	1.65	.94	1.10	.54	1.75
BAAS-62-500	BACH-62-500	---	5/8	.6235	.6220	5.00	.750	.580	1.65	.94	1.10	.54	1.75
BAAS-62-550	BACH-62-550	---	5/8	.6235	.6220	5.50	.750	.580	1.65	.94	1.10	.54	1.75
BAAS-62-600	BACH-62-600	---	5/8	.6235	.6220	6.00	.750	.580	1.65	.94	1.10	.54	1.75

Note: Products in this catalogue are subject to availability



Head Office: Concept Fasteners VIC
 9 Flight Drive, Tullamarine 3043, Victoria
 Tel: (03) 9338 6633 Fax: (03) 9338 6433
 : sales@conceptfasteners.com.au

Head Office: Concept Fasteners NSW
 5 Liverpool St, Ingleburn 2565, NSW
 Tel: (02) 9774 4416
 : salesnsw@conceptfasteners.com.au

Head Office: Concept Fasteners QLD
 Brisbane Branch Coming Soon!
 : qldsales@conceptfasteners.com.au