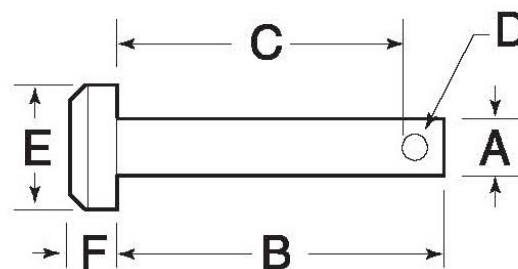


CLEVIS PINS

Concept Fasteners Pty Ltd

Standard



Manufactured to SAE standards (except hole size and point). For use with cotter pins or spring pins. Steel is low carbon 1010 or 1018 steel. Stainless steel is 300 series 18-8 equivalent.

Steel Cat. No.	Stainless Cat. No.	Shank Dia. Tolerance	A	B	C	D	E	F
CLP-2	CLP-2S	.186/.181	3/16	1/2	23/64	3/32	5/16	1/16
CLP-4	—	.186/.181	3/16	19/32	29/64	3/32	5/16	1/16
—	CLP-6S	.186/.181	3/16	5/8	31/64	3/32	5/16	1/16
CLP-8	CLP-8S	.186/.181	3/16	3/4	39/64	3/32	5/16	1/16
CLP-10	—	.186/.181	3/16	7/8	47/64	3/32	5/16	1/16
CLP-12	CLP-12S	.186/.181	3/16	1	55/64	3/32	5/16	1/16
CLP-14	CLP-14S	.186/.181	3/16	1 1/4	17/64	3/32	5/16	1/16
—	CLP-16S	.186/.181	3/16	1 1/2	123/64	3/32	5/16	1/16
—	CLP-20S	.186/.181	3/16	2	155/64	3/32	5/16	1/16
CLP-26	—	.248/.243	1/4	1/2	23/64	3/32	3/8	3/32
CLP-28	—	.248/.243	1/4	5/8	31/64	3/32	3/8	3/32
CLP-30	CLP-30S	.248/.243	1/4	3/4	39/64	3/32	3/8	3/32
CLP-34	—	.248/.243	1/4	7/8	47/64	3/32	3/8	3/32
CLP-36	CLP-36S	.248/.243	1/4	1	55/64	3/32	3/8	3/32
CLP-38	CLP-38S	.248/.243	1/4	1 1/8	63/64	3/32	3/8	3/32
CLP-40	CLP-40S	.248/.243	1/4	1 1/4	17/64	3/32	3/8	3/32
—	CLP-42S	.248/.243	1/4	1 3/8	115/64	3/32	3/8	3/32
CLP-44	CLP-44S	.248/.243	1/4	1 1/2	123/64	3/32	3/8	3/32
—	CLP-46S	.248/.243	1/4	1 5/8	131/64	3/32	3/8	3/32
—	CLP-48S	.248/.243	1/4	1 3/4	139/64	3/32	3/8	3/32
CLP-52	CLP-52S	.248/.243	1/4	2	155/64	3/32	3/8	3/32
CLP-54	—	.248/.243	1/4	2 1/8	163/64	3/32	3/8	3/32
—	CLP-56S	.248/.243	1/4	2 1/4	27/64	3/32	3/8	3/32
—	CLP-60S	.248/.243	1/4	2 1/2	223/64	3/32	3/8	3/32
CLP-62	—	.248/.243	1/4	2 3/4	239/64	3/32	3/8	3/32
CLP-68	—	.248/.243	1/4	4	355/64	3/32	3/8	3/32
CLP-72	—	.311/.306	5/16	3/4	17/32	9/64	7/16	3/32
CLP-78	CLP-78S	.311/.306	5/16	1	25/32	9/64	7/16	3/32
CLP-82	CLP-82S	.311/.306	5/16	1 1/4	11/32	9/64	7/16	3/32
—	CLP-84S	.311/.306	5/16	1 3/8	15/32	9/64	7/16	3/32
CLP-86	—	.311/.306	5/16	1 1/2	19/32	9/64	7/16	3/32
CLP-90	—	.311/.306	5/16	1 3/4	117/32	9/64	7/16	3/32
CLP-92	—	.311/.306	5/16	1 7/8	121/32	9/64	7/16	3/32
—	CLP-94S	.311/.306	5/16	2	125/32	9/64	7/16	3/32
CLP-96	—	.311/.306	5/16	2 3/16	131/32	9/64	7/16	3/32
—	CLP-98S	.311/.306	5/16	2 1/4	21/32	9/64	7/16	3/32
—	CLP-100S	.311/.306	5/16	2 1/2	29/32	9/64	7/16	3/32
CLP-102	—	.311/.306	5/16	2 5/8	213/32	9/64	7/16	3/32
CLP-104	CLP-104S	.373/.368	3/8	3/4	33/64	5/32	1/2	1/8
CLP-106	CLP-106S	.373/.368	3/8	1	49/64	5/32	1/2	1/8
CLP-110	CLP-110S	.373/.368	3/8	1 1/8	57/64	5/32	1/2	1/8
CLP-112	CLP-112S	.373/.368	3/8	1 1/4	11/64	5/32	1/2	1/8
CLP-116	CLP-116S	.373/.368	3/8	1 3/8	19/64	5/32	1/2	1/8
CLP-118	CLP-118S	.373/.368	3/8	1 1/2	117/64	5/32	1/2	1/8
CLP-120	CLP-120S	.373/.368	3/8	1 5/8	125/64	5/32	1/2	1/8
CLP-122	CLP-122S	.373/.368	3/8	1 3/4	133/64	5/32	1/2	1/8
CLP-124	—	.373/.368	3/8	1 7/8	141/64	5/32	1/2	1/8
CLP-126	CLP-126S	.373/.368	3/8	2	149/64	5/32	1/2	1/8
CLP-128	—	.373/.368	3/8	2 1/8	157/64	5/32	1/2	1/8
CLP-130	CLP-130S	.373/.368	3/8	2 1/4	21/64	5/32	1/2	1/8

Steel Cat. No.	Stainless Cat. No.	Shank Dia. Tolerance	A	B	C	D	E	F
CLP-134	CLP-134S	.373/.368	3/8	2 3/8	29/64	5/32	1/2	1/8
CLP-136	CLP-136S	.373/.368	3/8	2 1/2	217/64	5/32	1/2	1/8
CLP-138	CLP-138S	.373/.368	3/8	2 3/4	233/64	5/32	1/2	1/8
CLP-140	CLP-140S	.373/.368	3/8	3	249/64	5/32	1/2	1/8
CLP-142	—	.373/.368	3/8	3 1/2	317/64	5/32	1/2	1/8
CLP-144	CLP-144S	.373/.368	3/8	4	349/64	5/32	1/2	1/8
CLP-150	—	.436/.431	7/16	1 1/4	11/64	5/32	9/16	5/32
CLP-152	CLP-152S	.436/.431	7/16	1 1/2	117/64	5/32	9/16	5/32
—	CLP-156S	.436/.431	7/16	2	149/64	5/32	9/16	5/32
CLP-160	—	.436/.431	7/16	3	249/64	5/32	9/16	5/32
CLP-162	—	.496/.491	1/2	1	49/64	5/32	5/8	5/32
CLP-164	CLP-164S	.496/.491	1/2	1 1/4	11/64	5/32	5/8	5/32
CLP-166	—	.496/.491	1/2	1 27/64	13/16	5/32	5/8	5/32
CLP-168	CLP-168S	.496/.491	1/2	1 1/2	117/64	5/32	5/8	5/32
CLP-170	CLP-170S	.496/.491	1/2	1 3/4	133/64	5/32	5/8	5/32
CLP-172	CLP-172S	.496/.491	1/2	2	149/64	5/32	5/8	5/32
CLP-174	CLP-174S	.496/.491	1/2	2 1/4	21/64	5/32	5/8	5/32
CLP-176	CLP-176S	.496/.491	1/2	2 1/2	217/64	5/32	5/8	5/32
CLP-180	CLP-180S	.496/.491	1/2	2 3/4	233/64	5/32	5/8	5/32
CLP-182	CLP-182S	.496/.491	1/2	3	249/64	5/32	5/8	5/32
CLP-184	CLP-184S	.496/.491	1/2	3 1/2	317/64	5/32	5/8	5/32
CLP-186	CLP-186S	.496/.491	1/2	4	349/64	5/32	5/8	5/32
CLP-188	—	.496/.491	1/2	4 1/2	417/64	5/32	5/8	5/32
CLP-192	—	.558/.553	9/16	2	149/64	5/32	13/16	13/64
CLP-194	—	.621/.616	5/8	1 1/2	117/64	5/32	13/16	13/64
CLP-196	—	.621/.616	5/8	1 3/4	133/64	5/32	13/16	13/64
CLP-198	—	.621/.616	5/8	2	149/64	5/32	13/16	13/64
CLP-200	—	.621/.616	5/8	2 1/4	21/64	5/32	13/16	13/64
CLP-202	—	.621/.616	5/8	2 1/2	217/64	5/32	13/16	13/64
CLP-204	—	.621/.616	5/8	3	249/64	5/32	13/16	13/64
CLP-206	—	.621/.616	5/8	3 1/2	317/64	5/32	13/16	13/64
CLP-208	—	.746/.741	3/4	2	149/64	5/32	15/16	1/4
CLP-210	—	.746/.741	3/4	2 1/2	217/64	5/32	15/16	1/4
CLP-212	—	.746/.741	3/4	2 3/4	233/64	5/32	15/16	1/4
CLP-214	—	.746/.741	3/4	3	249/64	5/32	15/16	1/4
CLP-216	—	.746/.741	3/4	3 1/2	317/64	5/32	15/16	1/4
CLP-218	—	.746/.741	3/4	3 3/4	333/64	5/32	15/16	1/4
CLP-220	—	.746/.741	3/4	4	349/64	5/32	15/16	1/4
CLP-222	—	.746/.741	3/4	4 1/2	417/64	5/32	15/16	1/4
CLP-224	—	.746/.741	3/4	6	549/64	5/32	15/16	1/4
CLP-226	—	.996/.991	1	2	145/64	13/64	13/16	11/32
CLP-228	—	.996/.991	1	2 1/4	161/64	13/64	13/16	11/32
CLP-230	—	.996/.991	1	2 1/2	213/64	13/64	13/16	11/32
CLP-232	—	.996/.991	1	2 3/4	229/64	13/64	13/16	11/32
CLP-234	—	.996/.991	1	3	245/64	13/64	13/16	11/32
CLP-236	—	.996/.991	1	3 1/4	261/64	13/64	13/16	11/32
CLP-238	—	.996/.991	1	3 1/2	313/64	13/64	13/16	11/32
CLP-240	—	1.125/1.105	1 1/8	4	33/8	1/4	1 3/8	23/64
CLP-242	—	1.125/1.105	1 1/8	5	43/8	1/4	1 3/8	23/64
CLP-248	—	1.250/1.230	1 1/4	5	43/8	1/4	1 5/8	27/64
CLP-250	—	1.250/1.230	1 1/4	6	53/8	1/4	1 5/8	27/64