

Reel Mounted Spacers and Nuts



Series CRM

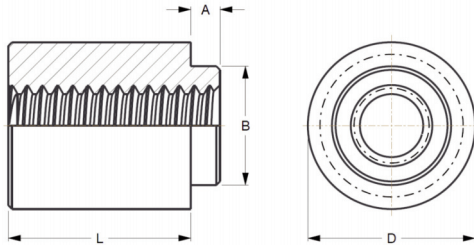
CRM Reel Mount nuts and spacers provide a low-install-cost solution for surface mount hardware. The fasteners are fed from the recycleable reel using “pick and place” equipment and oriented prior to the reflow soldering operation.

Series	Material	Finish
CRM	Carbon Steel	Electro Tin Plating ASTM B545 Class A w/Preservative Coating

Thread: Internal 2B, ANSI B1.1 (6H, ANSI/ASME B1.13M).

Part Number Structure:

CRM- 440 - 4



Dimensions & Specifications

INCH (in.)	Thread Size	Series	Thread Code	Thru Hole +.004 -.003	L Length ±.005				A Max.	Min	+0.003 -.000	B Max	D ±.005	Min Solder Pad Ø
					.062	.125	.250	.375						
	#2-56	CRM	256		-2	-4	-8	-12	.060	.060	.147	.142	.219	.244
	#4-40	CRM	440		-2	-4	-8	-12	.060	.060	.166	.161	.219	.24
	#6-32	CRM	632		-2	-4	-8	-12	.060	.060	.213	.208	.281	.306
	#8-32	CRM	832		-2	-4	-8	-12	.060	.060	.250	.245	.344	.369
		CRM		.116	-2	-4	-8	-12	.060	.060	.166	.161	.219	.244
		CRM		.143	-2	-4	-8	-12	.060	.060	.213	.208	.281	.306

METRIC (mm.)	Thread Size	Series	Thread Code	Thru Hole +.10 -.08	L Length ±.13 mm						A Max.	Min	+0.08 -.00	B Max	D ±.13	Min Solder Pad Ø
					2	3	4	6	8	10						
	M2 x 0.4	CRM	M2		-2	-3	-4	-6	-8	-10	1.53	1.53	3.73	3.6	5.56	6.2
	M2.5 x 0.45	CRM	M2.5		-2	-3	-4	-6	-8	-10	1.53	1.53	4.22	4.09	5.56	6.2
	M3 x 0.5	CRM	M3		-2	-3	-4	-6	-8	-10	1.53	1.53	4.22	4.09	5.56	6.2
	M3.5 x 0.6	CRM	M3.5		-2	-3	-4	-6	-8	-10	1.53	1.53	5.41	5.28	7.14	7.77
	M4 x 0.7	CRM	M4		-2	-3	-4	-6	-8	-10	1.53	1.53	6.35	6.22	8.74	9.37
		CRM		3.6	-2	-3	-4	-6	-8	-10	1.53	1.53	5.41	5.28	7.14	7.77
		CRM		4.2	-2	-3	-4	-6	-8	-10	1.53	1.53	6.35	6.22	8.74	9.37

Note: All Items Subject to Minmun Order

Number of Parts per Reel / Pitch (mm) for Each Size - as per EIA standard (13" reels/24mm wide)

Thread Size & Thru Hole Size	Length						
	2	3	4	6	8	10	12
256, 440, 632, .116, .143	1500 / 12	--	1000 / 12	--	650 / 12	--	300 / 16
832	1100 / 16	--	800 / 16	--	500 / 16	--	300 / 16
M2, M2.5, M3, M3.5, 3.6	1500 / 12	1000 / 12	900 / 12	650 / 12	375 / 16	300 / 16	--
M4, 4.2	1100 / 16	800 / 16	675 / 16	500 / 16	375 / 16	200 / 16	--