



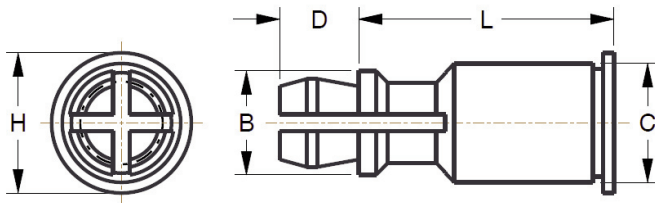
Self-Clinching Spring-Top

Standoffs

Series CFSSA, CFSSS & CFSSC



CFSSA, CFSSS & CFSSC spring-top standoffs are designed for permanent installation into sheet metal by pressing into a prepared hole. The spring-action post provides quick attachment and removal with a simple snap eliminating the problems associated with loose hardware.

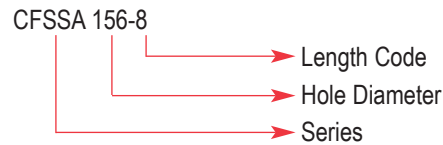


Series	Material	Finish
CFSSA	7075-T6 Aluminum	Plain
CFSSS	Carbon Steel	Zinc* Clear
CFSSC	400 Series Stainless Steel	Passivated ASTM A967

*See Finish Spec. on Page 6.

Use in: CFSSA – Cold-rolled Steel HRB-50 or less.
 CFSSS – Cold-rolled Steel HRB-60 or less.
 CFSSC – Cold-rolled Steel HRB-70 or less.

Part Number Structure:



Dimensions & Specifications

INCH (in.)	Series	Top Panel Mounting Hole Diameter Code	L Length $\pm .005$ in. (Length Code in 32nds of an inch)										B $\pm .005$	C Max.	D $\pm .005$	H $\pm .005$	
			.250	.312	.375	.437	.500	.562	.625	.750	.875	1.000					
	CFSSA	156	-8	-10	-12	-14	-16	-18	-20	-24	-28	-32		.188	.212	.141	.250
	CFSSC	156	-8	-10	-12	-14	-16	-18	-20	-24	-28	-32					
	CFSSS	156	-8	-10	-12	-14	-16	-18	-20	-24	-28	-32					

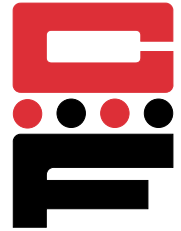
Dimensions & Specifications

METRIC (mm)	Series	Top Panel Mounting Hole Diameter Code	L Length $\pm .13$ mm (Length Code is in millimeters)									B $\pm .13$	C Max.	D $\pm .13$	H $\pm .13$	
			8	10	12	14	16	18	20	22	25					
	CFSSA	4MM	-8	-10	-12	-14	-16	-18	-20	-22	-25		4.78	5.39	3.58	6.35
	CFSSC	4MM	-8	-10	-12	-14	-16	-18	-20	-22	-25					
	CFSSS	4MM	-8	-10	-12	-14	-16	-18	-20	-22	-25					

Continued on next page.



Self-Clinching Spring Top Standoffs



Series CFSSA, CFSSS & CFSSC

Continued from previous page.

Installation & Performance Data

INCH (in.)	Series	Bottom Panel (Fixed)					Top Panel (Removable)			
		Bottom Mounting Hole +.003 -.000	Material	Hardness Max.	Thickness Min.	Location Tolerance Min.	Top Mounting Hole +.003 -.000	Material	Thickness Range	Min.
CFSSA	.213	Metal	HRB50	.040	.260	±.005	.156	P-C board or metal	.040-.070	.100
CFSSS	.213		HRB60	.040	.260	±.005	.156		.100	
CFSSC	.213		HRB70	.040	.260	±.005	.156		.100	

Installation & Performance Data

INCH (in.)	Series	Bottom Panel (Fixed)			Top Panel (Removable)		
		Sheet Thickness & Sheet Material	Installation (lbs.)	Pushout (lbs.)	Max. first on force (lbs.)	Min. first off force (lbs.)	Min. 15th off force (lbs.)
CFSSA	.040 Aluminum HRB 25	1500	200	13	3.0	1.0	
CFSSS	.040 Aluminum HRB 25	1500	200	20	6.0	2.0	
CFSSC	.060 Cold-rolled Steel HRB 64	3600	400	20	6.0	2.0	

Installation & Performance Data

METRIC (mm)	Series	Bottom Panel (Fixed)					Top Panel (Removable)			
		Bottom Mounting Hole +.08 -.00	Material	Hardness Max.	Thickness Min.	Location Tolerance Min.	Top Mounting Hole +.08 -.00	Material	Thickness Range	Min.
CFSSA	5.41	Metal	HRB50	1	6.6	±.134	4.0	P-C board or metal	1-1.8	2.54
CFSSS	5.41		HRB60	1	6.6	±.134	4.0		2.54	
CFSSC	5.41		HRB70	1	6.6	±.134	4.0		2.54	

Installation & Performance Data

METRIC (mm)	Series	Bottom Panel (Fixed)			Top Panel (Removable)		
		Sheet Thickness & Sheet Material	Installation (kN)	Pushout (N)	Max. first on force (N)	Min. first off force (N)	Min. 15th off force (N)
CFSSA	1.0 Aluminum HRB 25	6.7	880	58	13	4.0	
CFSSS	1.0 Aluminum HRB 25	6.7	880	89	27	9.0	
CFSSC	1.52 Cold-rolled Steel HRB 64	15.5	1780	89	27	9.0	