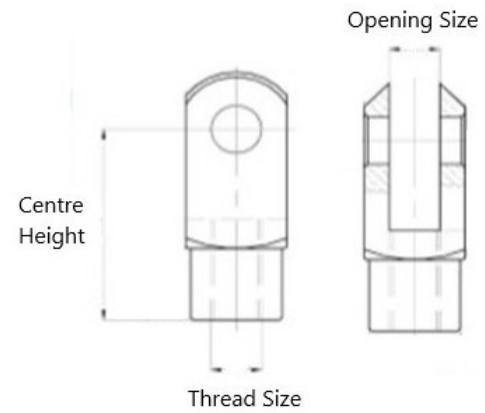
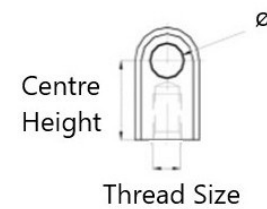


Gas Strut Clevis Pin End Fittings



Part Number	Opening Size	Centre Height	Thread Size
SFCL0612M6	6	12mm	M6
SFCL0624M6	6	24mm	M6
SFCL0624M6-Clip			
SFCL0636M6	6	36mm	M6
SFCL0636M6-Clip			
SFCL0816M8	8	16mm	M8
SFCL0832M8	8	32mm	M8
SFCL0832M8-Clip			
SFCL1020M10	10	20mm	M10
SFCL1040M10	10	40mm	M10
SFCL1040M10-CLIP			
SFCL1224M12	12	24mm	M12
SFCL1224M12-Clip			
SFCL1248M12	12	48mm	M12
SFCL1228M14	12	28mm	M14

Gas Strut Eyelet End Fittings



Part Number	Centre Height	Hole Dia	Thread Size
SFEM06060518	18mm	6.1	M6
SFEM06080518	18mm	8	M6

Note: Products in this catalogue are subject to availability



Head Office: Concept Fasteners VIC
 9 Flight Drive, Tullamarine 3043, Victoria
 Tel: (03) 9338 6633 Fax: (03) 9338 6433
 : sales@conceptfasteners.com.au

Head Office: Concept Fasteners NSW
 5 Liverpool St, Ingleburn 2565, NSW
 Tel: (02) 9774 4416
 : salesnsw@conceptfasteners.com.au

Head Office: Concept Fasteners QLD
 Brisbane Branch Coming Soon!
 : qldsales@conceptfasteners.com.au