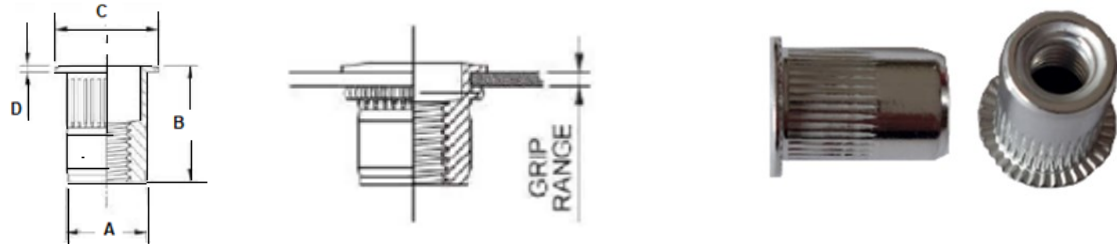


**Description**

**Open End Aluminium AL Style - With Knurl**

**Specifications**

**Material** Aluminium  
**Finish** Clear



**Dimensions**

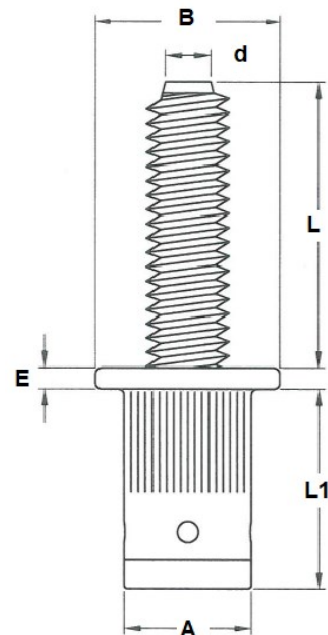
Part Code	Thread Size	Grip Range	Hole Size +0.1	A +0.05/-0.15	B + 0.25	C + 0.25	D ± 0.1
AA-AL-M4-2.0	M4 x 0.7	0.5 - 2.0	6.8	6.75	11.7	9.5	0.6
AA-AL-M5-3.3	M5 x 0.8	0.5 - 3.3	7.6	7.52	13.1	10.1	0.6
AA-AL-M5-5.7	M5 x 0.8	3.3 - 5.7	7.6	7.52	13.1	10.1	0.6
AA-AL-M6-4.2	M6 x 1.0	0.7 - 4.2	10	9.91	17.2	12.7	0.6
AA-AL-M8-7.9	M8 x 1.25	3.8 - 7.9	13.5	13.46	18.7	17.4	0.8
AA-AL-M10-3.8	M10 x 1.5	0.7 - 3.8	13.5	13.46	18.7	17.4	0.8
AA-AL-M10-7.9	M10 x 1.5	3.8 - 7.9	13.5	13.46	20.45	17.4	0.8

**Stud Inserts for Thin Sheet material**

**LG Studsert nose assembly available.**



<b>STUDSERT</b>	Low Carbon Steel	Zinc Clear CR3
-----------------	------------------	----------------



Part Number	d	A Max	B +0.30	E +0.15	L +0.50	L1 +0.50	Grip Range	Hole Size +0.1/-0
SDR-LM425-15	M4	6.0	9.0	1.0	15.0	11.0	0.5-2.5	6.0
SDR-LM530-15	M5	7.0	10.0	1.0	15.0	12.0	0.5-3.0	7.0
SDR-LM630-20	M6	9.0	13.0	1.5	20.0	14.0	0.5-3.0	9.0
SDR-LM830-20	M8	11.0	16.0	1.5	20.0	16.0	0.5-3.0	11.0

*Note: Products in this catalogue are subject to availability*



**Head Office: Concept Fasteners VIC**  
 9 Flight Drive, Tullamarine 3043, Victoria  
 Tel: (03) 9338 6633 Fax: (03) 9338 6433  
 : sales@conceptfasteners.com.au

**Concept Fasteners NSW**  
 5 Liverpool St, Ingleburn 2565, NSW  
 Tel: (02) 9774 4416  
 : salesnsw@conceptfasteners.com.au

**Concept Fasteners QLD**  
 Brisbane Branch Coming Soon!  
 : qldsales@conceptfasteners.com.au