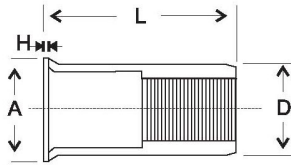
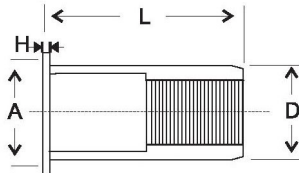


Open End Steel Reduced Head - Imperial Measurement



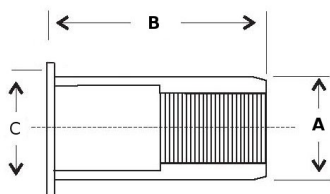
Part Number	Thread Size	Grip Range (inch)	Hole Size +0.01 -0.01	D +0.000 -0.004	H	L +0.008 -0.008	A +0.008 -0.008
INSERNUT 8/32	UNC 8-32	0.02-0.10	0.253	0.249	0.020	0.409	0.289
INSERNUT 3/16	UNC 10-24	0.02-0.10	0.284	0.280	0.020	0.464	0.320
INSERNUT 1/4	UNC 1/4	0.04-0.15	0.378	0.374	0.020	0.575	0.414
INSERNUT 5/16	UNC 5/16	0.04-0.16	0.420	0.416	0.020	0.630	0.456
INSERNUT 3/8	UNC 3/8	0.04-0.16	0.504	0.500	0.020	0.708	0.540

Open End Steel Large Flange - Imperial Measurement



Part Number	Thread Size	Grip Range (inch)	Hole Size +0.0 -0.01	D +0.000 -0.004	H	L +0.008 -0.008	A +0.008 -0.008
INSERNUT 8/32 LF	UNC 8-32	0.02-0.10	0.240	0.236	0.032	0.413	0.354
INSERNUT 3/16 LF	UNC 10-24	0.02-0.10	0.280	0.276	0.040	0.453	0.393
INSERNUT 1/4 LF	UNC 1/4	0.04-0.14	0.358	0.354	0.059	0.571	0.512
INSERNUT 5/16 LF	UNC 5/16	0.04-0.16	0.437	0.433	0.059	0.650	0.517
INSERNUT 3/8 LF	UNC 3/8	0.04-0.16	0.516	0.512	0.059	0.748	0.630

Open End Steel Bright Zinc 3/8 UNC - Large Flange



Part Number	Thread Size	Grip Range	Hole Size +0.1	A +0.05/-0.15	B +0.25	C +0.25
INSERNUT 3/8/LFCR3	3/8"	0.5 - 3	0.516	0.51"	0.76"	0.67"
INSERNUT 3/8/LFZ	3/8"	0.5 - 3	0.490	0.489"	0.74"	0.77"

Thread Size	Screw Tensile KGF/N		Screw Torque KGF.CM/IN-LBS	
INSERNUT 3/8/LFCR3	3100	30300	322	280
INSERNUT 3/8/LFZ	3100	30300	322	280

Note: Products in this catalogue are subject to availability



Head Office: Concept Fasteners VIC  
 9 Flight Drive, Tullamarine 3043, Victoria  
 Tel: (03) 9338 6633 Fax: (03) 9338 6433  
 Email: sales@conceptfasteners.com.au

Concept Fasteners NSW  
 5 Liverpool St, Ingleburn 2565, NSW  
 Tel: (02) 9774 4416  
 Email: salesnsw@conceptfasteners.com.au

Concept Fasteners QLD  
 Brisbane Branch Coming Soon!  
 Email: qldsales@conceptfasteners.com.au