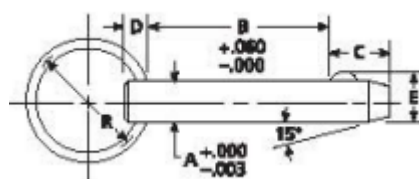


Detent Pins

These Detent pins have a spring loaded ball that retracts when it is inserted or removed. The ball and spring are made from 300 series stainless steel. The rings are made from steel for steel pins and stainless steel for stainless steel pins. Solid body provides maximum shear strength. The steel type are made from zinc plated C1144 steel, The stainless are made from 303. Other lengths are available. Commercial drill tolerances provide clearance for the pins.



Steel Part No.	Stainless Part No.	A Dia	B Grip Length	C	D	E	R
DP-5	DP-400	3/16	.50	.200	.187	.204	1.000
DP-10	DP-405	3/16	.80	.200	.187	.204	1.000
DP-15	DP-410	3/16	1.00	.200	.187	.204	1.000
DP-20	DP-415	3/16	1.30	.200	.187	.204	1.000
DP-25	DP-420	3/16	1.50	.200	.187	.204	1.000
DP-30	DP-425	3/16	2.00	.200	.187	.204	1.000
DP-35	DP-430	3/16	2.50	.200	.187	.204	1.000
DP-40	DP-435	3/16	3.00	.200	.187	.204	1.000
DP-45	DP-440	1/4	.50	.312	.220	.286	1.000
DP-50	DP-445	1/4	.80	.312	.220	.286	1.000
DP-55	DP-450	1/4	1.00	.312	.220	.286	1.000
DP-60	DP-455	1/4	1.30	.312	.220	.286	1.000
DP-65	DP-460	1/4	1.50	.312	.220	.286	1.000
DP-70	DP-465	1/4	2.00	.312	.220	.286	1.000
DP-75	DP-470	1/4	2.50	.312	.220	.286	1.000
DP-80	DP-475	1/4	3.00	.312	.220	.286	1.000
DP-85	DP-480	5/16	.80	.375	.250	.358	1.000
DP-90	DP-485	5/16	1.00	.375	.250	.358	1.000
DP-95	DP-490	5/16	1.30	.375	.250	.358	1.000
DP-100	DP-495	5/16	1.50	.375	.250	.358	1.000
DP-105	DP-500	5/16	2.00	.375	.250	.358	1.000
DP-110	DP-505	5/16	2.50	.375	.250	.358	1.000
DP-115	DP-510	5/16	3.00	.375	.250	.358	1.000
DP-120	DP-515	5/16	3.50	.375	.250	.358	1.000
DP-125	DP-520	5/16	4.00	.375	.250	.358	1.000
DP-130	DP-525	3/8	.80	.500	.250	.426	1.000
DP-135	DP-530	3/8	1.00	.500	.250	.426	1.000
DP-140	DP-535	3/8	1.30	.500	.250	.426	1.000
DP-145	DP-540	3/8	1.50	.500	.250	.426	1.000
DP-150	DP-545	3/8	2.00	.500	.250	.426	1.000
DP-155	DP-550	3/8	2.50	.500	.250	.426	1.000
DP-160	DP-555	3/8	3.00	.500	.250	.426	1.000
DP-165	DP-560	3/8	3.50	.500	.250	.426	1.000
DP-170	DP-565	3/8	4.00	.500	.250	.426	1.000
DP-175	DP-570	3/8	4.50	.500	.250	.426	1.000
DP-180	DP-575	3/8	5.00	.500	.250	.426	1.000
DP-185	DP-580	1/2	1.00	.625	.312	.570	1.250
DP-190	DP-585	1/2	1.30	.625	.312	.570	1.250
DP-195	DP-590	1/2	1.50	.625	.312	.570	1.250
DP-200	DP-595	1/2	2.00	.625	.312	.570	1.250
DP-205	DP-600	1/2	2.50	.625	.312	.570	1.250
DP-210	DP-605	1/2	3.00	.625	.312	.570	1.250
DP-215	DP-610	1/2	3.50	.625	.312	.570	1.250
DP-220	DP-615	1/2	4.00	.625	.312	.570	1.250
DP-225	DP-620	1/2	4.50	.625	.312	.570	1.250
DP-230	DP-625	1/2	5.00	.625	.312	.570	1.250
DP-235	DP-630	1/2	5.50	.625	.312	.570	1.250
DP-240	DP-635	1/2	6.00	.625	.312	.570	1.250

Steel Part No.	Stainless Part No.	A Dia	B Grip Length	C	D	E	R
DP-245	DP-640	5/8	2.00	.750	.375	.710	1.250
DP-250	DP-645	5/8	2.50	.750	.375	.710	1.250
DP-255	DP-650	5/8	3.00	.750	.375	.710	1.250
DP-260	DP-655	5/8	3.50	.750	.375	.710	1.250
DP-265	DP-660	5/8	4.00	.750	.375	.710	1.250
DP-270	DP-665	5/8	4.50	.750	.375	.710	1.250
DP-275	DP-670	5/8	5.00	.750	.375	.710	1.250
DP-280	DP-675	5/8	6.00	.750	.375	.710	1.250
DP-285	DP-680	3/4	2.00	.937	.375	.856	1.500
DP-290	DP-685	3/4	2.50	.937	.375	.856	1.500
DP-295	DP-690	3/4	3.00	.937	.375	.856	1.500
DP-300	DP-695	3/4	3.50	.937	.375	.856	1.500
DP-305	DP-700	3/4	4.00	.937	.375	.856	1.500
DP-310	DP-705	3/4	4.50	.937	.375	.856	1.500
DP-315	DP-710	3/4	5.00	.937	.375	.856	1.500
DP-320	DP-715	3/4	6.00	.937	.375	.856	1.500
DP-325	DP-720	3/4	6.50	.937	.375	.856	1.500
DP-330	DP-725	3/4	7.00	.937	.375	.856	1.500
DP-335	DP-730	3/4	8.00	.937	.375	.856	1.500
DP-340	DP-735	1	2.00	1.250	.500	1.140	1.500
DP-345	DP-740	1	2.50	1.250	.500	1.140	1.500
DP-350	DP-745	1	3.00	1.250	.500	1.140	1.500
DP-355	DP-750	1	3.50	1.250	.500	1.140	1.500
DP-360	DP-755	1	4.00	1.250	.500	1.140	1.500
DP-365	DP-760	1	4.50	1.250	.500	1.140	1.500
DP-370	DP-765	1	5.00	1.250	.500	1.140	1.500
DP-375	DP-770	1	5.50	1.250	.500	1.140	1.500
DP-380	DP-775	1	6.00	1.250	.500	1.140	1.500
DP-385	DP-780	1	7.00	1.250	.500	1.140	1.500
DP-390	DP-785	1	8.00	1.250	.500	1.140	1.500

Concept Fasteners Pty Ltd
9 Flight Drive Tullamarine
3043
Victoria Australia
www.conceptfasteners.com.au

Note: Products in this catalogue are subject to availability



Head Office: Concept Fasteners VIC
9 Flight Drive, Tullamarine 3043, Victoria
Tel: (03) 9338 6633 Fax: (03) 9338 6433
Email: sales@conceptfasteners.com.au

Head Office: Concept Fasteners NSW
5 Liverpool St, Ingleburn 2565, NSW
Tel: (02) 9774 4416
Email: salesnsw@conceptfasteners.com.au

Head Office: Concept Fasteners QLD
Brisbane Branch Coming Soon!
Email: qldsales@conceptfasteners.com.au