

• **PACKING**

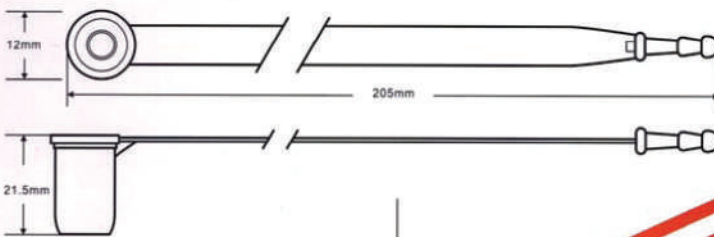
Main Applications: Containers, railway cars, truck trailers, boxes, bags.  
 Material: Steel pin and barrel both covered with ABS plastic.  
 Strength: More than 300kgs pull load.  
 Colors: Red, Yellow, Blue, Green, White.

◆ Part number **B131**



SMALL BOLT SEAL

Available with barcode  
 Standard colours  
 Red, Green, Blue, Yellow  
 Other colours available  
 on quantity orders



• **PACKING**

2000pcs into a carton  
 Measure: 380\*270\*350mm  
 Gross weight: 8 kgs  
 Net weight: 7 kgs

◆ Part number **HS013**



FLYED LENGTH SEAL AVAILABLE WITH BARCODES

Available with barcode  
 Standard colours  
 Red, Green, Blue, Yellow  
 Other colours available  
 on quantity orders