

• **PACKING**

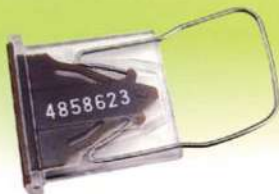
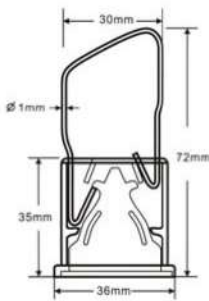
2000pcs into a carton.
measure: 450*275*275mm
Gross weight: 14 kgs
Net weight: 13 kgs

◆ Part number **HS058**



HASP LOCK SEAL

Available with barcode
Standard colours
Red, Green, Blue, Yellow
Other colours available
on quantity orders



• **PACKING**

2000pcs into a carton.
measure: 430*250*350mm
Gross weight: 15.8 kgs
Net weight: 14.5 kgs

◆ Part number **HS1100**



Available with barcode
Standard colours
Red, Green, Blue, Yellow
Other colours available
on quantity orders